



MATATIELE
LOCAL MUNICIPALITY

MATATIELE LOCAL MUNICIPALITY

Research and analysis of ward profiling: Ward based plans

WARD 19

May 2018

TSHANI
CONSULTING C.C.

Contents

1. Executive Summary of Ward4

2. Methodology4

3. Ward Overview.....5

4. Socio Economic Analysis6

5. Built Environment Assessment 12

6. Current Projects 15

7. Ward Needs and Priorities 15

8. Stakeholder within Ward 16

9. Social Challenges..... 17

List of Tables

Table 1: SWOT Analysis – Community Based Planning Program 2017 (Data Collection).....	5
Table 2: Major Event within the Ward – Community Based Planning Program 2017 (Data Collection)	5
Table 3: Programmes within the Ward – Community Based Planning Program 2017 (Data Collection)	6
Table 4 : Population Size and Distribution within the Ward – Community Based Planning Program 2017 (Data Collection).....	6
Table 5: Social Grant Dependency within Ward - Community Based Planning Program 2017 (Data Collection).....	7
Table 6: Child and Female Headed Households within the Ward - Census 2011	8
Table 7: Education Facilities within Ward - Community Based Planning Program November 2017 (Data Collection).....	9
Table 8: Churches and Religious Organisations within the Ward - Community Based Planning Program 2017 (Data Collection).....	9
Table 9: Health Care Facilities: Community Based Planning Program 2017 (Data Collection)	10
Table 10: Community Halls - Community Based Planning Program 2017 (Data Collection)	10
Table 11: Economic Activity - Community Based Planning Program 2017 (Data Collection).....	11
Table 12: Tourism Activities - Community Based Planning Program 2017 (Data Collection).....	11
Table 13: Agricultural Activities within Ward Community Feedback- Community Based Planning Program 2017 (Data Collection).....	11
Table 14: Existing Skills within the Ward: Community Based Planning Program 2017 (Data Collection) ..	12
Table 15: Household access to Waste Removal - Community Based Planning Program 2017 (Data Collection).....	12
Table 16: Access to water- Community Based Planning Program 2017 (Data Collection)	13
Table 17: Access to sanitation- Community Based Planning Program 2017 (Data Collection)	13
Table 18: Main source of Energy within Ward Community Feedback	14
Table 19: Roads and Bridges within the Ward.....	14
Table 20: Current Projects within Ward Community Feedback	15
Table 21: Ward Priorities- Community Based Planning Program 2017 (Data Collection).....	16
Table 22: Ward Priorities within Ward Community Feedback- Community Based Planning Program 2017 (Data Collection).....	16
Table 23: Stakeholders within Ward Community Feedback- Community Based Planning Program 2017 (Data Collection).....	17
Table 24: Social Challenge within Ward Community Feedback- Community Based Planning Program 2017 (Data Collection).....	17

List of Figures

Figure 1: Gender Distribution	6
Figure 2: Age within Ward Distribution – Census 2011	7
Figure 3: Language Proficiency within Ward – Census 2011.....	7
Figure 4: Gender of Household Head - Census 2011	8
Figure 5: Types of Dwelling within Ward – Census 2011	9
Figure 6: Individual Monthly Income - Census 2011	11
Figure 7: Access to Solid Waste Removal - Census 2011	12
Figure 8: Source of Water supply within the Ward - Community Based Planning Program 2017 (Data Collection)	13
Figure 9: Access to Sanitation Facilities – Census 2011	13

List of Plans

Plan 1: Ward 19 Locality	4
Plan 2: Education Facilities.....	9
Plan 3: Other Social Facilities.....	10
Plan 4: Access to Waste Removal - Census 2011	12
Plan 5: Access to Flush toilets - Census 2011	14
Plan 6: Roads and Bridges within the Ward - MLM GIS	15

The following sections have been identified and populated as part of the analysis for Ward 19. The headings, which have been covered are seen as critical topics for the ward analysis. When broken down, one can properly understand and interpret the spatial economic status quo and development trajectory of the Ward.

1. Executive Summary of Ward

Ward 19 is situated in the heart of MLM. The Ward is surrounded entirely by ward 20. It comprises of North End, West Side, New J, Dog Street/Central and Buxton Avenue. The total population of Ward 19 is estimated at 4 124, as per *ward based plan programme 2017 (Data Collection)* the number of households consist of 1378. The most spoken language in Ward is English and isiXhosa, followed by Afrikaans. The gender split within Ward 19 is made up of 53% female and 47% males.

Ward 19 is one of the central cluster ward that is situated along R56 which runs through Matatiele town in an east-west direction serves as the main regional access route that links Matatiele with other Urban Centres such as Kokstad to the East and Mount Fletcher to the South West. Secondary to the N2, it serves as the main link between the Eastern Cape Province and KwaZulu-Natal Province. The Matatiele town is a sub-regional centre serving the entire Matatiele Local Municipality and beyond, it is identified as the Primary node or main economic hub for investment promotion and centre of supply of services in the Matatiele Local Municipality.

There are health care facility, education facilities, public amenities facilities, government departments, markets amongst others located within the ward, in Matatiele CBD.

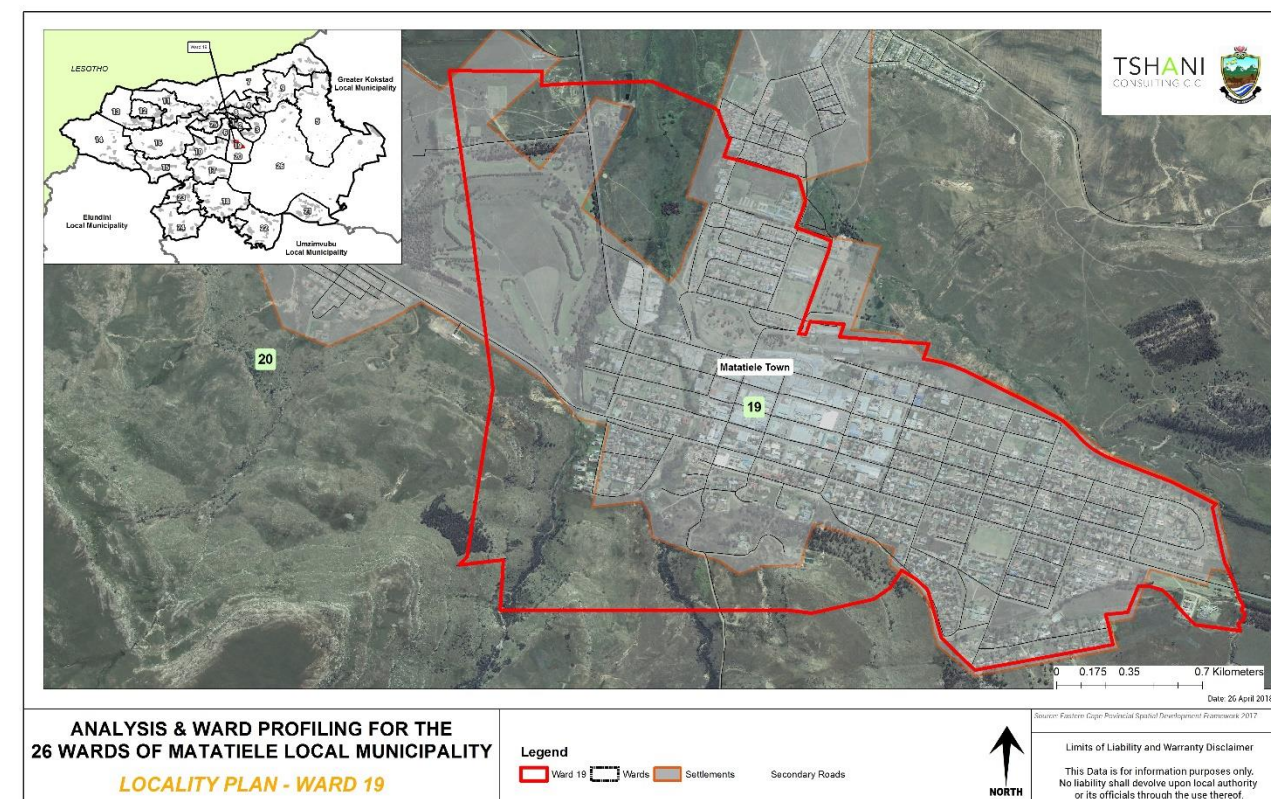
All the residential areas in the ward indicate the availability of waste removal services by MLM; twice a week. In ward 19, there households serviced twice a week, on Tuesday and Thursday. Households in Ward 19 use electricity as the main source of energy for lighting, heating and cooking. This indicates that the level of service within the ward is relatively high.

In terms of water and sanitation, the District Municipality (ANDM) currently provides water and sanitation to Matatiele Local Municipality area. All households have running water in the household structures and in the yard.



1.1. Locality

Ward 19 is situated in the heart of MLM. The Ward is surrounded entirely by ward 20. As identified within the Community Outreach Programme, the main locations within Ward 19 are North end, West Side, Buxton Avenue, New J and Dog Street/ Central.



Plan 1: Ward 19 Locality

2. Methodology

The methodology utilised for the analysis and profiling in this report was derived as follows:

1. Synthesis an interpretation of questionnaires and community feedback;
2. Translated information into a Strength, Weakness, Opportunities and Threats analysis;
3. Conducted a verification process on the populations profiles, social profile and economic profile using Census 2011 data, which was conducted at a Ward level;
4. A detailed GIS mapping exercise was completed in order to translate the findings into spatially represented outcomes;
5. Ward needs, and priorities were identified for the wards;
6. Needs identified for the ward were translated into projects and a consolidated implementation plan together within financial implications was completed.

The analysis of ward 19 also took its '*point of departure*' from the primary data, which was available from the data collection and community consultation completed in the previous phase

3. Ward Overview

The section below highlights the specific sections which were analysed in relation to ward 19.

3.1. SWOT Analysis

The SWOT analysis was developed, through a series of engagement sessions with the local community and traditional leadership of Ward 19, by the municipality.

STRENGTHS	WEAKNESSES
<ul style="list-style-type: none">R56 through the town of MatatieleDecent housingAccess to services, amenities and facilitiesMatatiele CBDAvailability of primary and high schoolsGovernment departments and municipality office located within the ward.	<ul style="list-style-type: none">SecurityInsufficiency of vacant landLack of housingSchool drop-outsImprovement to sewer networkLack of Trade schoolsDecapitated internal streets and drive waysUpgrade/Re-surface internal roadsAging infrastructure.Lack of recreational facilities in residential areas
OPPORTUNITIES	THREATS
<ul style="list-style-type: none">Housing developmentTo build industry for job creationSkilled people and professionalsYouthful populationAccommodation and tourism facilities	<ul style="list-style-type: none">High youth unemploymentHigh substance abuseCrime/Housebreaking/RobberyUnfenced and unsecure openings between houses/residents and parksInflux of people within the townLand invasionNon-adherence to by-laws

Table 1: SWOT Analysis – Community Based Planning Program 2017 (Data Collection)

3.2. Major events within the Ward

The table below highlights the major events which have taken place /happened within Ward 19 over the last 10 years (2007 – 2017). The ward has experienced positive investment in the form of a Jazz Festival taking place, opening of new chain restaurants, construction of RDP houses, etc.

EVENT/ OCCURANCE	YEAR	IMPACT
2010 Soccer World Cup	2010	TV screen for public viewing at North End stadiums allowed community to share the experience of the world cup
MATAT2PONT	2011	Screened on 189 DSTV-tourism
MATAT FEES	2011	Benefited tourism/brought in SA Champs
MATAT Jazz Festival	2012	Benefited and generated revenue for local business
Gospel Concert	2014	Benefited revenue for local business
Heritage Marathon	2017	Brought in athletes from all around the province
RDP Houses	2007	Benefited homeless members of the community
Opening of boxer complex		Has supermarkets, restaurants and clothing stores
Opening of new chain restaurants (Wimpy, Debonairs, Fishaways, Steers)		
Drought	2015-2016	The community experienced severe water shortages. At times going for day without running water.

Table 2: Major Event within the Ward – Community Based Planning Program 2017 (Data Collection)

3.3. Services/ Infrastructure and Programmes Within the Ward Within The 5-Year Period (2012-2016)

Ward 19 has experienced a fair amount of infrastructure investment in the 2015-16 financial year. It is evident that the benefits of these projects have benefited the ward as well as the municipality as a whole.

Type	Year	Beneficiaries	Status / present condition	Impact
Fresh Produce	2016	Local	Completed	Job Creation
Kth Santa	2014	Local	In Progress	Job Creation
Mini Sub Station	2016	Local	Complete	Job Creation
Council Chambers	2014	Local	In Progress	Job Creation
Water Infrastructure	2015	Local	Continuing	Job Creation
Hawkers Stalls	2015/16	Hawkers	In Service	Business Opportunity
Building of Social Development Offices			Opened in 2017	

Type	Year	Beneficiaries	Status / present condition	Impact
Upgrading of Matatiele Prison				
Upgrading of High Street				

Table 3: Programmes within the Ward – Community Based Planning Program 2017 (Data Collection)

4. Socio Economic Analysis

4.1. Population Profile

The sub sections below provide an analysis of the population profile of ward 19.

4.1.1. Population Size and Distribution

The total population of Ward 19 is 4 124 and compromises of 1 378 households.

LIST OF VILLAGES/ LOCATIONS/SUB AREAS	OTHER NAME/S FOR THE VILLAGE/ LOCATION	NUMBER OF HOUSEHOLDS			POPULATION SIZE (NUMBER OF PEOPLE)		
		Community Feedback	Census 2011	Projected Household by 2050 growing at 0.3% Per Annum	Community Feedback	Census 2011	Projected Population by 2050 growing at 0.4% Per Annum
North End	Balloon- Living Vine	187			788		
West Side	Hawkins Avenue- Station Road	200			672		
Buxton Avenue	Pick and Pay above main street- Taylor Bequest above main street	290			760		
New J	School street-Main street	342			1 068		
Dog Street/ Central	Railway road – Main street	359			836		
TOTAL POPULATION		1 378	1 374	1 517	4 124	4 122	4 684

Table 4 : Population Size and Distribution within the Ward – Community Based Planning Program 2017 (Data Collection)

 **TOTAL**
POPULATION OF
4124

4.1.2. Gender Distribution

The chart below depicts that 53% of the total population of Ward 19 are female. This is typical of most wards within Matatiele.

Gender Distribution

■ Male ■ Female

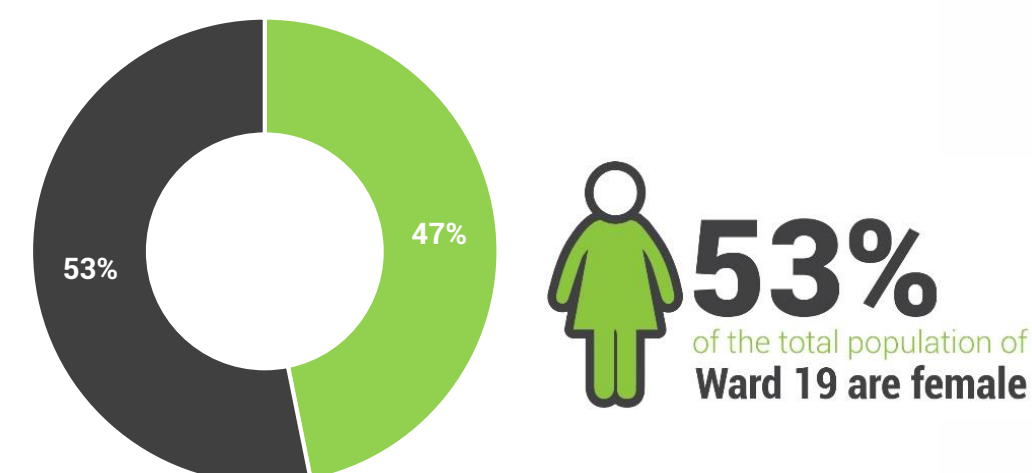


Figure 1: Gender Distribution

4.1.3. Age

The dominant age group in Ward 19, is the classified age group of 25 – 29 years. The population of this ward is dominated by young (0 – 19 years) and working-class age groups (20 – 60 years).

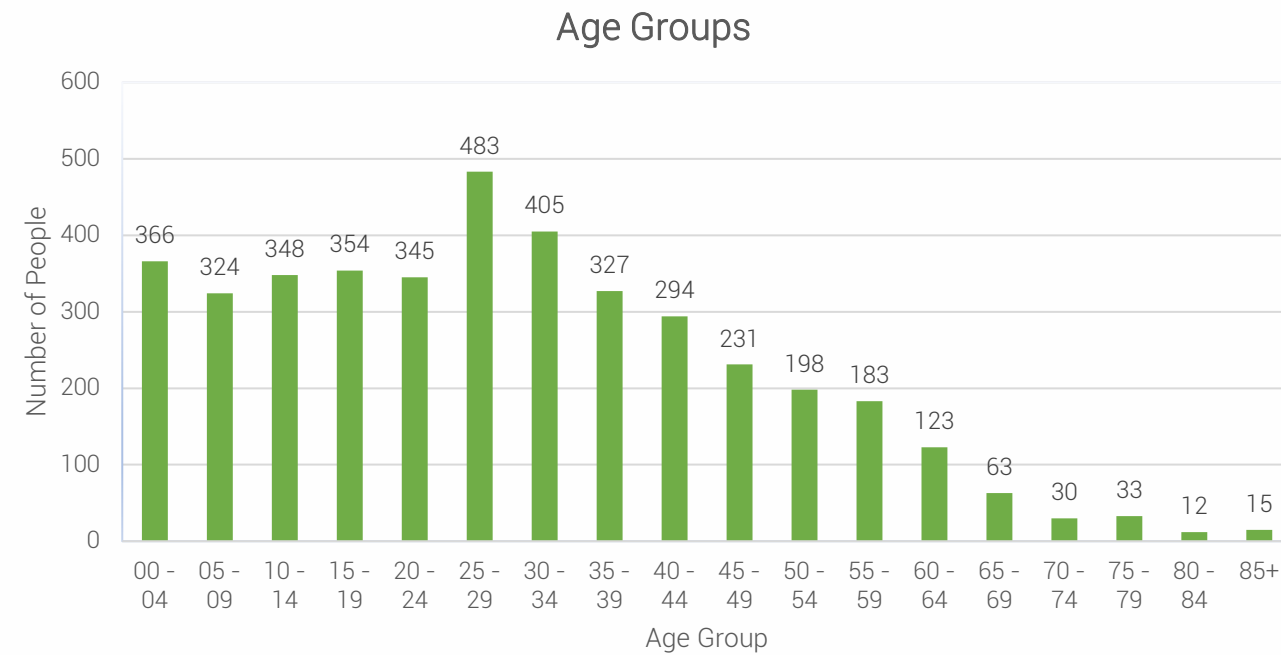


Figure 2: Age within Ward Distribution – Census 2011

4.1.4. Language Distribution

It is evident that the most spoken language in Ward 19 is English and isiXhosa, followed by Afrikaans. The language preference correlates to the racial split within ward 19 and is an indication of the language preference which people appreciate.

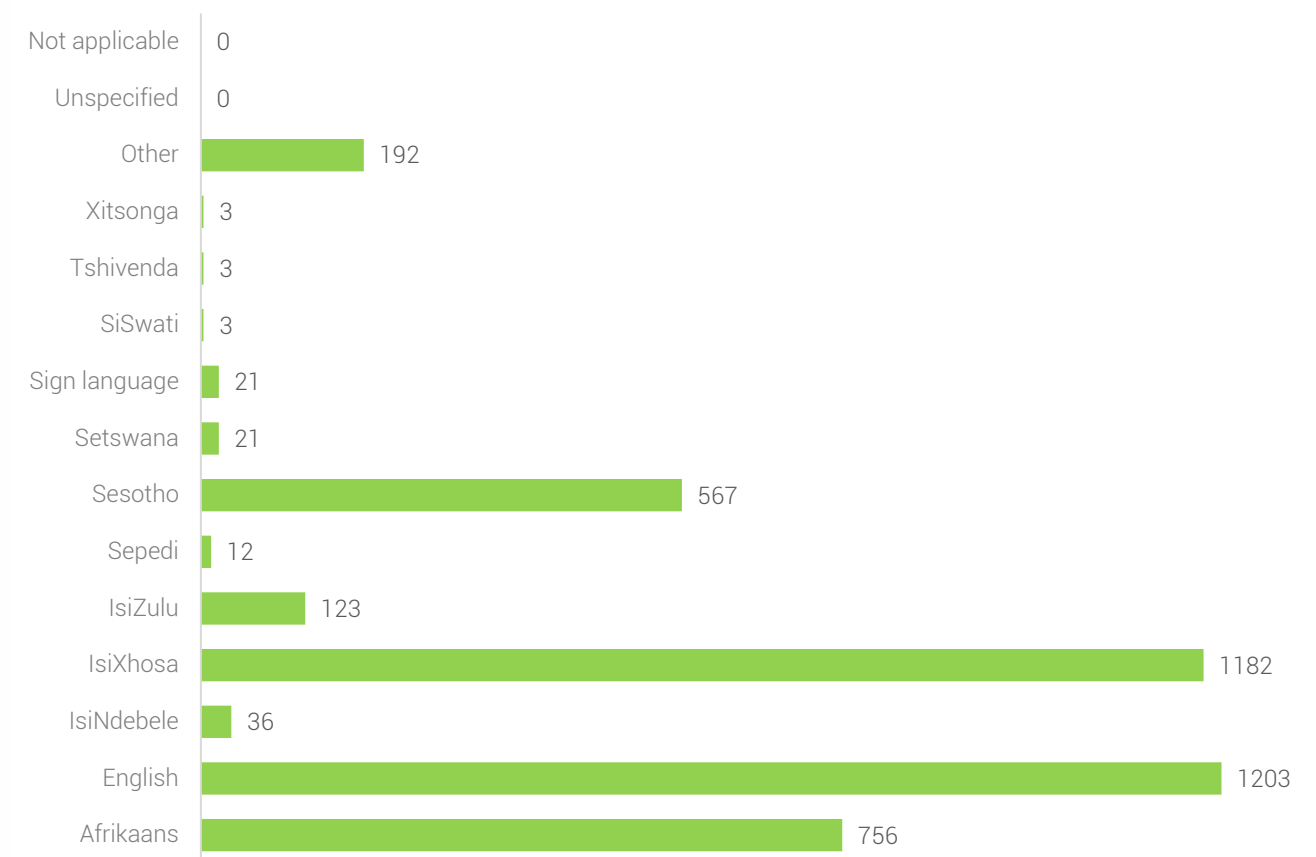


Figure 3: Language Proficiency within Ward – Census 2011

4.1.5. Social Grants

TYPE OF SOCIAL ASSISTANCE OFFERED	NUMBER OF HOUSEHOLDS/ BENEFICIARIES
	Community Feedback
SASSA (various social assistance programmes)	550

Table 5: Social Grant Dependency within Ward - Community Based Planning Program 2017 (Data Collection)

4.1.6. Indigent Support

A rural municipality with a high dependency rate on social assistance; MLM has a large number of indigent households. Particularly for this ward 19. Although the number is high, it is only a few households that receive indigent supports from the municipality. The challenges that affect to the provision of such support, include beneficiaries with no properly documents, challenges with verification of beneficiaries amongst other issues. In this ward MLM provides indigent support in the form electricity, waste removal, rates. The current indigent support register show that only 55 beneficiaries in this ward receives support.

55 indigent beneficiaries identified within Ward 19

4.2. Household Profile

The section below details of households within Ward 19 in terms of their size, gender of heads of households and distribution.

4.2.1. Average Household Size

The households with Ward 19 include an average of three (3) persons per household.

4.2.2. Heads of Households

The issue of child headed households is not a challenge in Ward 19 unlike the rest of MLM in general.

Villages	Child-Headed households		Female-Headed Households	
	Community Feedback	Census 2011	Community Feedback	Census 2011
North End	Nil		57	879
West Side	Nil		25	594
Buxton Avenue	Nil		15	
New J	Nil		100	
Dog Street/ Central	Nil		45	
Total	Nil	Nil	242	609

Table 6: Child and Female Headed Households within the Ward - Census 2011

The graph below indicates that approximately 44% of households in ward 19 are headed by women.

Gender of Household Head

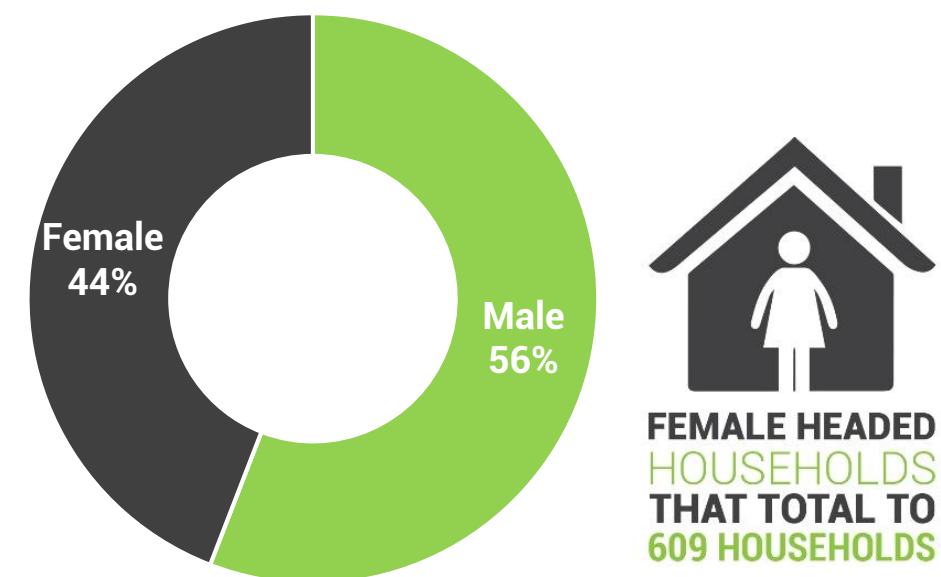


Figure 4: Gender of Household Head - Census 2011

4.2.3. Household Dwelling types

The majority of people in Ward 19 live in a house or brick/ concrete structure on a separate stand. The back rooms/flat lets are also a popular settlement feature within the Ward. *There needs to this be greater Land Use Planning By-Law enforcement to ensure that the type of development is controlled and managed.*

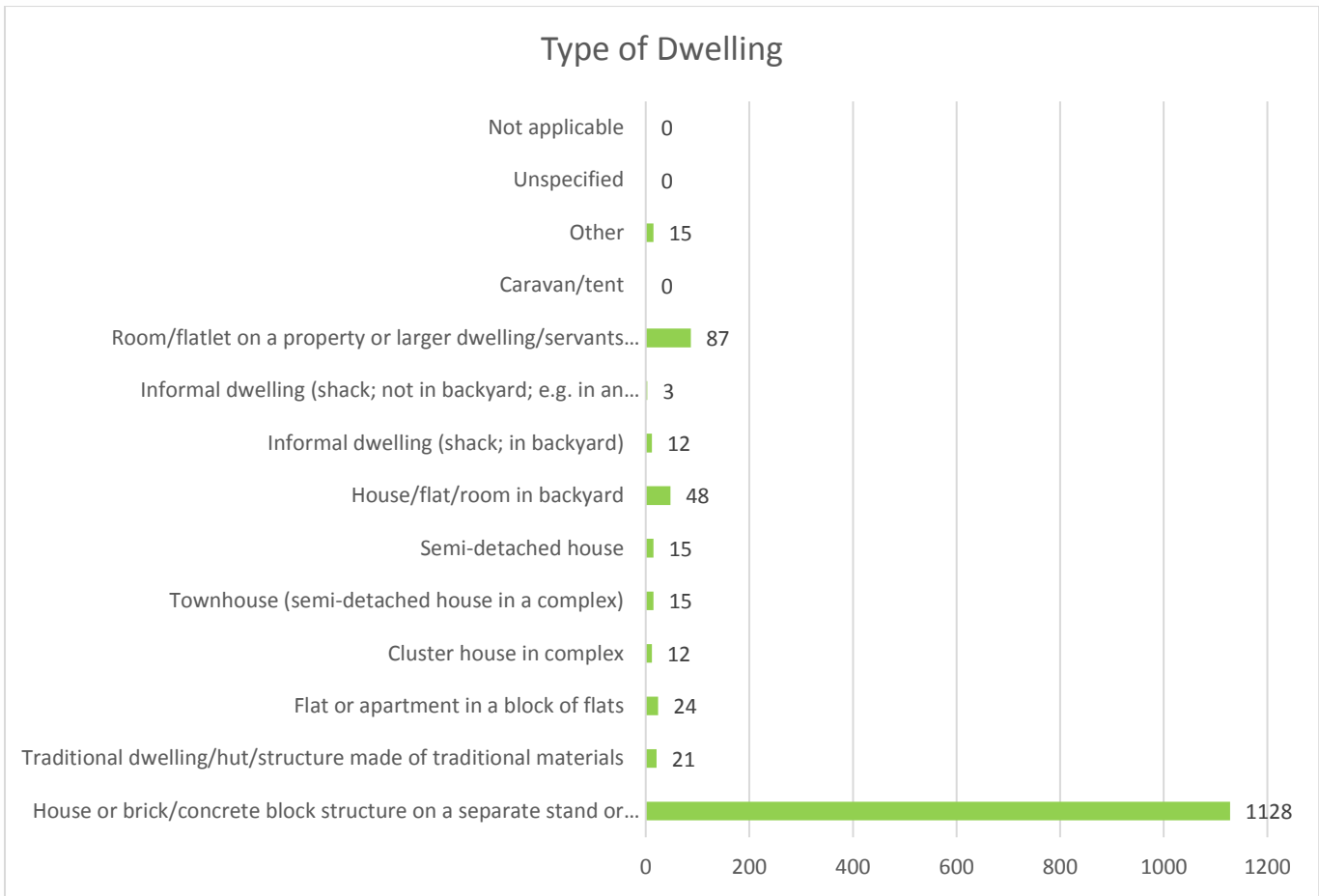


Figure 5: Types of Dwelling within Ward – Census 2011

4.3. Social Profile

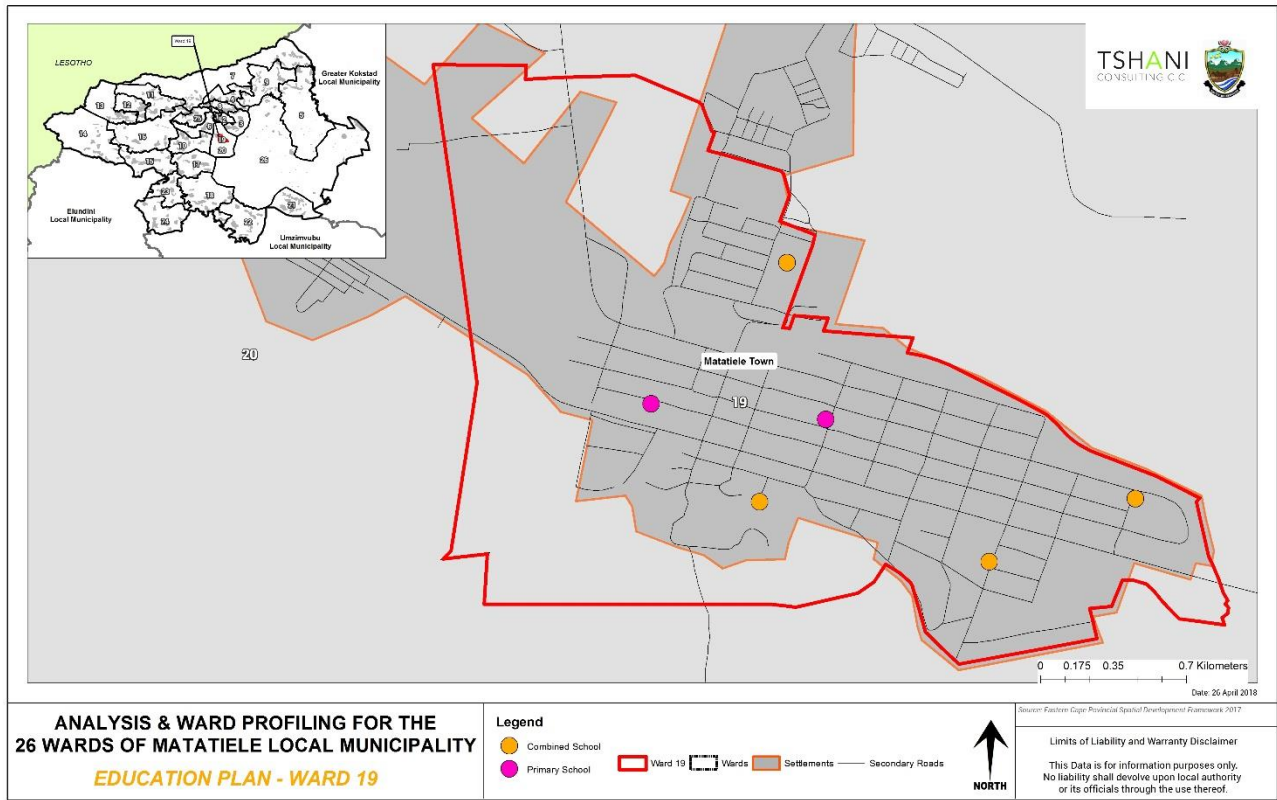
4.3.1. Education Facilities: Community Feedback

The range of schools identified in the table below was developed form the community feedback sessions.

NAME	TYPE	AREA LOCATED	NUMBER OF LEARNERS
King Edward High School	It's a School fees paying High School (Public School)	Buxton	729
Focused High School	Private H/S	Main	349
St Monica's Diocesan School	Private H/S	New J	400
Bergview College	Private H/S	New J	400
Matat Primary School	No government fees	North End	400
Sunshine Primary school		West Street	80
Twinkle Star Pre- School and Day Care		North End	80
Bergview Pre-School		Buxton Avenue	120

Table 7: Education Facilities within Ward - Community Based Planning Program November 2017 (Data Collection)

4.3.2. Education Facilities: Census 2011



Plan 2: Education Facilities

4.3.3. Churches and Religious Organisations: Community Feedback

The range of religious facilities identified in the table below was developed form the community feedback sessions. *Some of the churches do not have the structures, as they operate within the households.*

NA ME	LOCATION/AREA	NUMBER
Roman Catholic Church	Main Street	1
NG Kerk	Main Street	1
Methodist Church	High Street	2
Full Gospel Church	West Street	1
Assemblies of God	Kok Street	1
Griqua Independent	North Street	1

Table 8: Churches and Religious Organisations within the Ward - Community Based Planning Program 2017 (Data Collection)

4.3.4. Health Care Facilities: Community Feedback

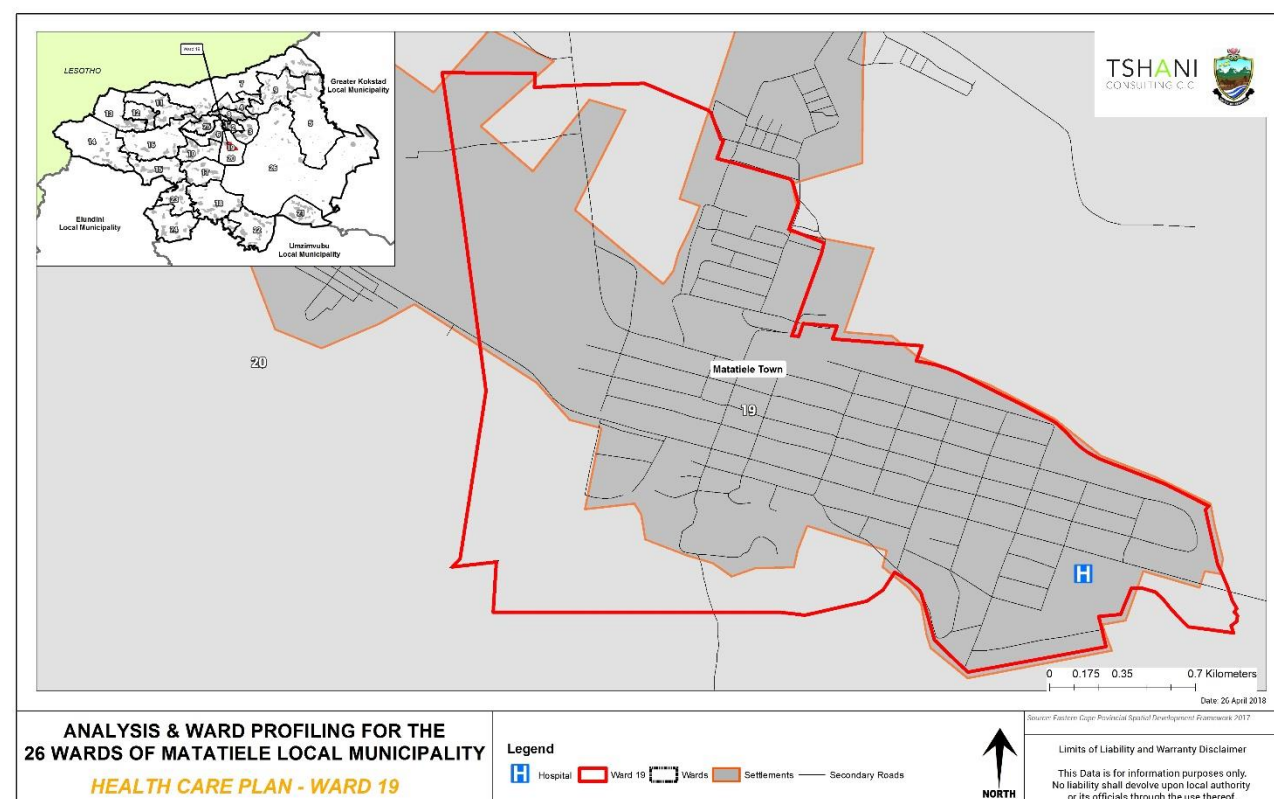
The community feedback identified many health care facilities of various types. The facilities seem to be sufficient to cater to the population.

Name and type	Area located	Primary services provided
Matatiele Clinic	North End	All (TB/HIV, MCWH, NCCD, WBOT, CHN, EMR)
Taylor Bequest Hospital	Main Street	All Hospital Services
Matatiele Private Hospital	CBD	
Clinics and pharmacies	CBD: Jubilee, Matat Pharm, Bergview	Clinic services
10 Surgeries	CBD	
4 Optometrists	CBD	
2 Dentists	CBD	
Physiotherapy, psychologist,	CBD	

Table 9: Health Care Facilities: Community Based Planning Program 2017 (Data Collection)

4.3.5. Health Care Facilities

The map below spatially identified the one hospital and no clinics within Ward 19.



Plan 3: Other Social Facilities

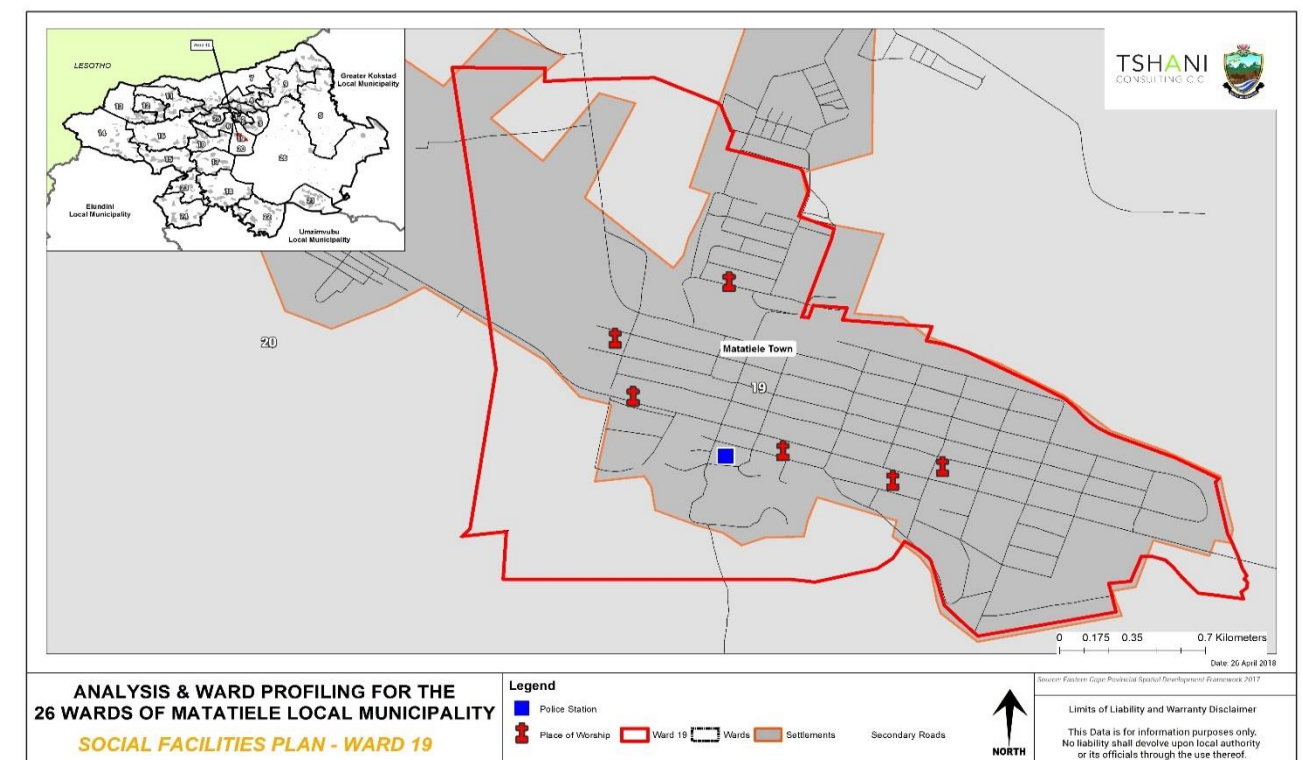
4.3.6. Community Hall: Community Feedback

Name and type	Area located
Matatiele Town Hall	CBD

Table 10: Community Halls - Community Based Planning Program 2017 (Data Collection)

4.3.7. Other Social Facilities

The map below spatially identifies places of worship and police stations.



Plan 4: Other Social Facilities

4.4. Economic Profile

4.4.1. Individual Monthly Income

This community has medium to high income earners. An estimated 8.7% of households within the wards is recorded to have no monthly income. The income within the ward has potential to be much higher given the majority of the population falling within the working age bracket.

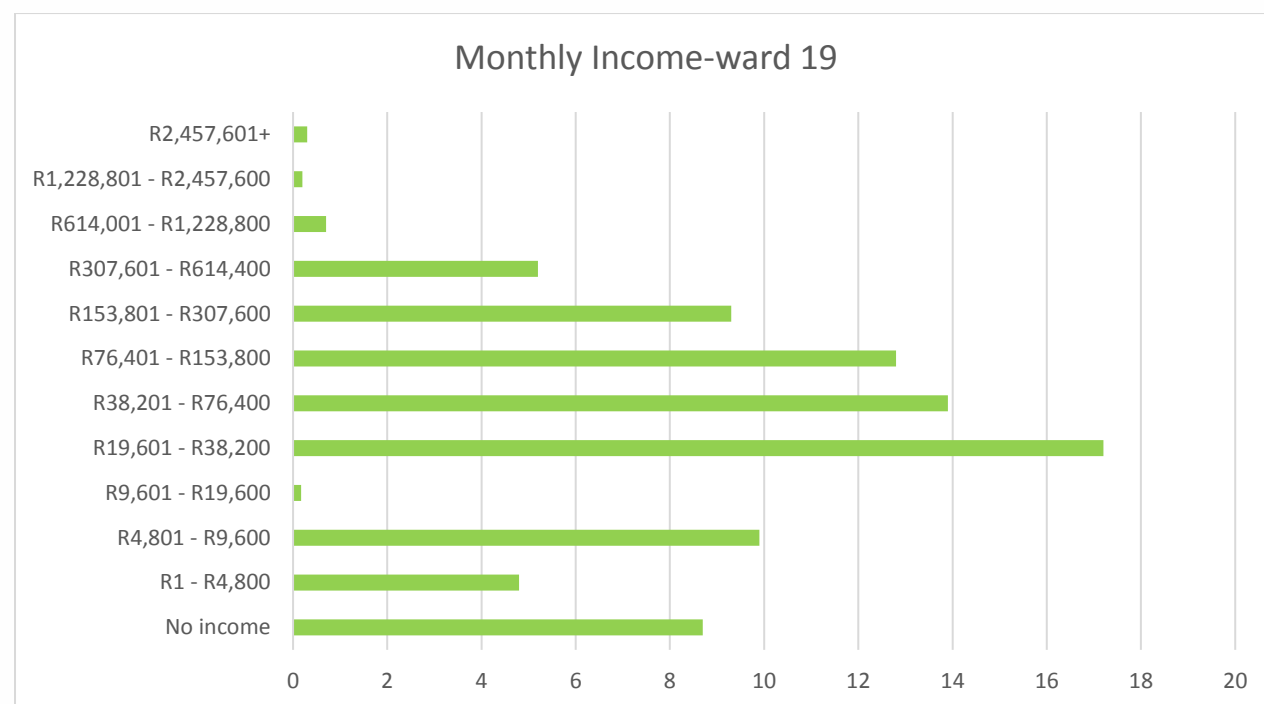


Figure 6: Individual Monthly Income - Census 2011

4.4.2. Economic Activities: Community Feedback

It is noted that shops that sell alcohol are the most dominant in Ward 19. Six (6) facilities which retails alcoholic beverages were noted at Ward 19. This is very typical of areas with a very high unemployment rate and youth.

RETAIL (INDICATE SHOPS, SPAZA SHOPS, CAFÉ, TARVENS, SALONS, ETC)	
TYPE	LOCATION
Supermarkets	CBD
Hardwares	CBD
Wholesalers	CBD
Chain Stores	CBD
Food Outlets	CBD
Entertainment Casino / Taverns	CBD
Bottle Stores	CBD
Vehicle Outlets and Petrol Stations	CBD

Table 11: Economic Activity - Community Based Planning Program 2017 (Data Collection)

4.4.3. Tourism Activities

The indication of tourism facilities present indicates that there is room for growing a broader tourism base within Ward 19.

TOURISM (INDICATE B&B'S, HOTELS, ATTRACTION SITES, ETC)	
TYPE	LOCATION
Hotels	R56
Guest Houses	R56 and CBD and Residential
B & B S	R56 and CBD and Residential
Boarding Houses	Residential
Chalets	Mountain Lake

Table 12: Tourism Activities - Community Based Planning Program 2017 (Data Collection)

4.4.4. Agricultural Activities

The community of ward 19 did not indicate any practises in both commercial and subsistence farming for their agricultural products.

TYPE OF PRODUCTS	FOR HOUSEHOLD CONSUMPTION	FOR SELLING TO THE COMMUNITY
Cattle	No	No
Sheep	No	No
Goats	No	No
Horses	No	No
Poultry	No	No
Vegetables	Yes	No
Fruits	Yes	
Grains	Yes	

Table 13: Agricultural Activities within Ward Community Feedback- Community Based Planning Program 2017 (Data Collection)

4.4.5. Existing Skills

The ward constitutes of some diverse skills which is a major asset for the ward. Such individuals need to be further trained and opportunities to mentor other unemployed individuals within the community should be encouraged. The entrepreneurs within ward should also be given better access to market opportunities. There a broad range of professionally qualified individuals whom also are major assets for Ward 19.

TYPE OF SKILLS	EXISTING (INDICATE WITH YES/NO)	TYPE OF SKILLS	EXISTING (INDICATE WITH YES/NO)
Carpenters	Yes	Pottery	Yes
Plumbing	Yes	Teachers	Yes
Builders	Yes	Police	Yes
Artists	Yes	Health Officials	Yes
Gardening	Yes	Accountants	Yes
Cooking	Yes	Engineers	Yes
Sewing	Yes	Lawyers	Yes
Writing	Yes	Other (Indicate)	
Drivers	Yes		
Farmers			

Table 14: Existing Skills within the Ward: Community Based Planning Program 2017 (Data Collection)

5. Built Environment Assessment

5.1. Access to Waste Removal

The community feedback session presented the following findings: Ward 19 have their waste removed by the municipality at least twice a week. The Plan below further identified that within Ward 19 people have access to waste removal services.

LOCATION/ AREA	NO. OF HOUSEHOLDS SERVICES	FREQUENCY
North End	187	Tuesday and Fridays
West Side	200	Monday and Thursday
Buxton	290	Monday and Thursdays
New J	342	Monday and Thursdays
Central	359	Daily

Table 15: Household access to Waste Removal - Community Based Planning Program 2017 (Data Collection)

Solid Waste Removal

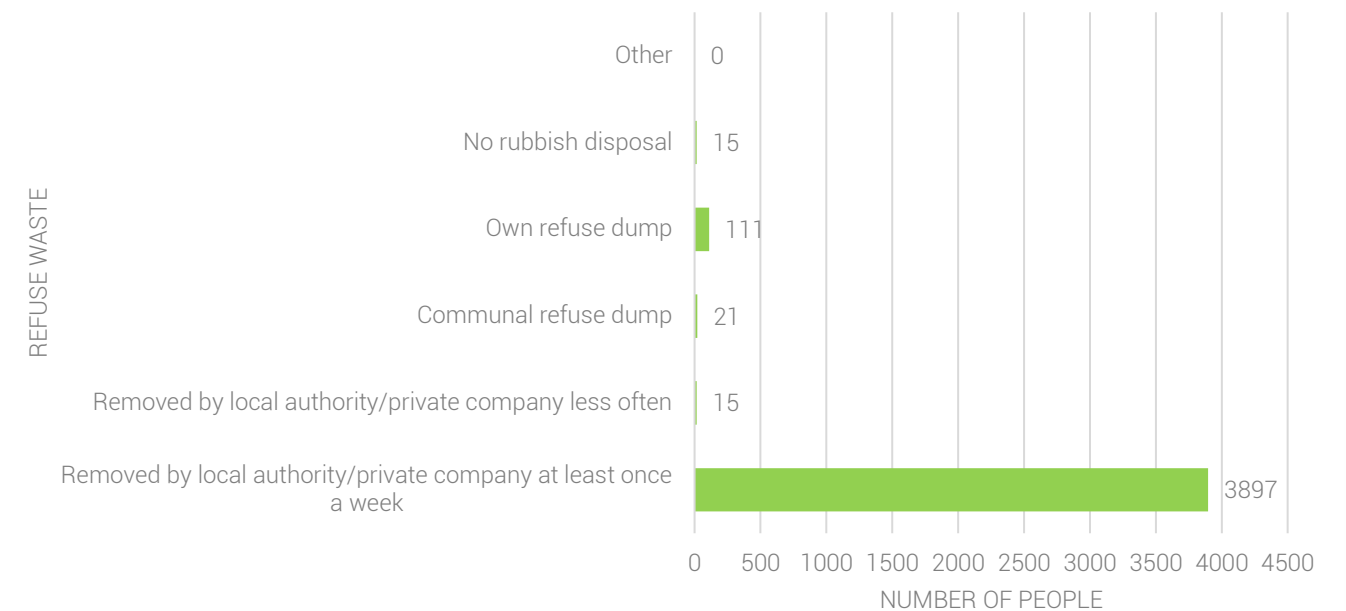
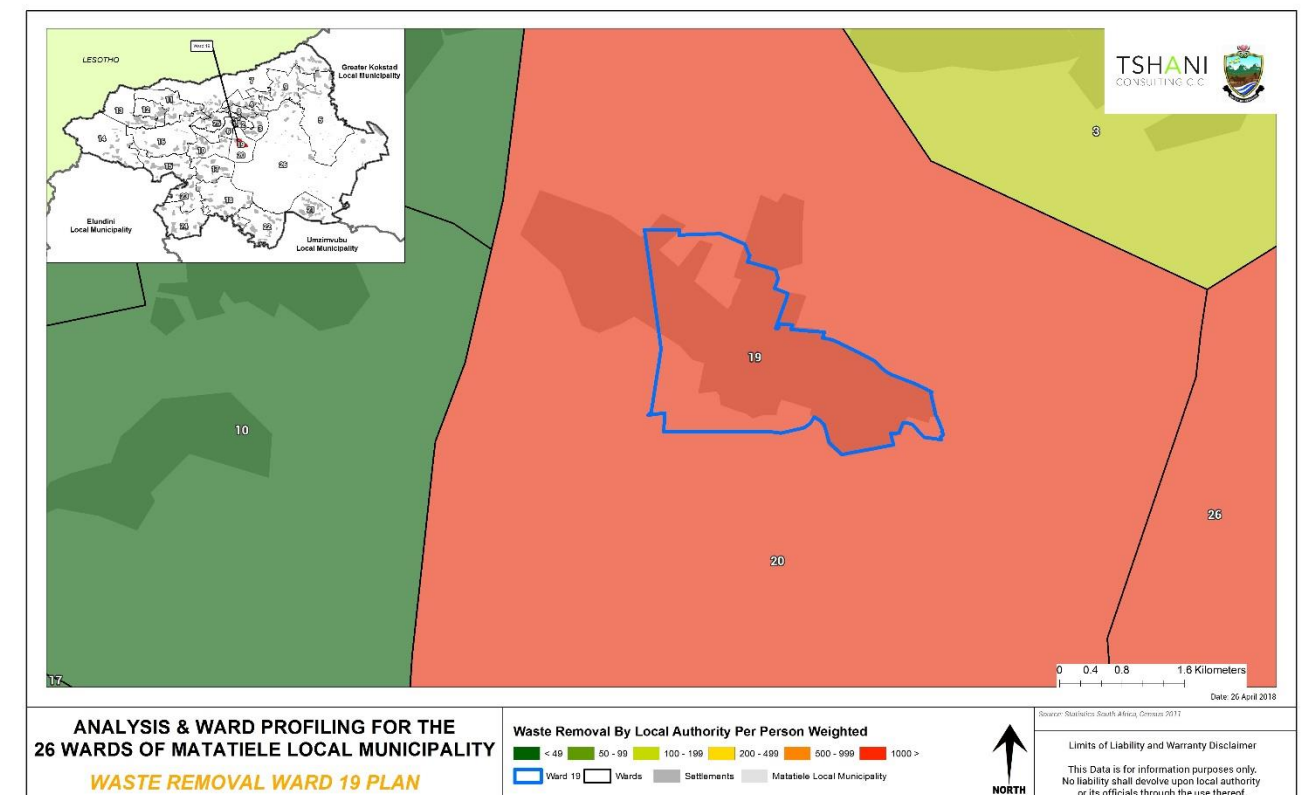


Figure 7: Access to Solid Waste Removal - Census 2011



Plan 4: Access to Waste Removal - Census 2011

5.2. Access to Water

The main supplier of water is the District Municipality (ANDM) which currently provides water to Matatiele area. All households within the ward have access to running water.

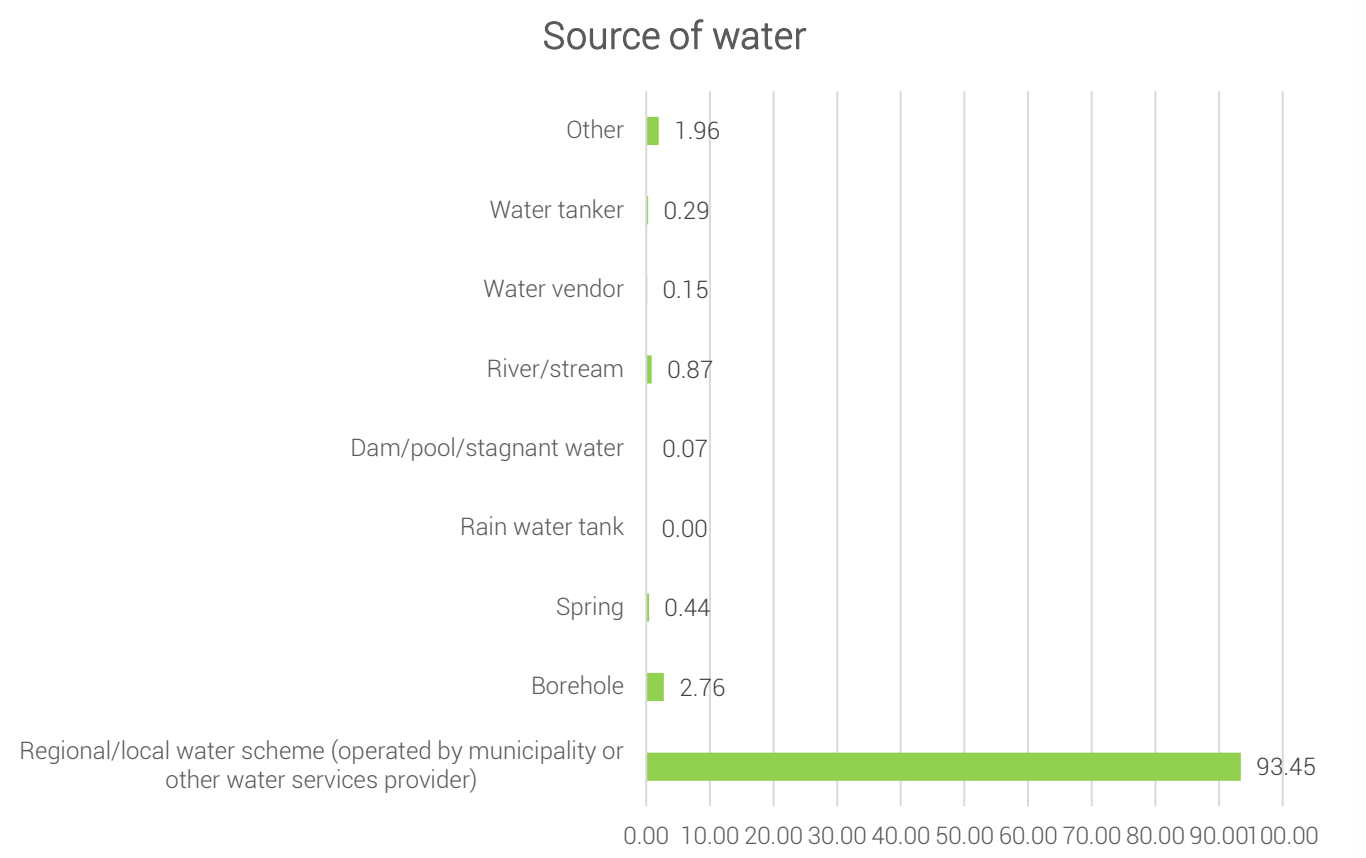


Figure 8: Source of Water supply within the Ward - Community Based Planning Program 2017 (Data Collection)

VILLAGE/LOCATION	COMMUNITY TAPS	WATER- INSIDE YARD	WATER- INSIDE HOUSE	BOREHOLES	DRAW WATER FROM STREAMS, DAMS, RIVER
North End	N/A	187	187	1	N/A
West Side	N/A	200	200		N/A
Buxton	N/A	290	290	1	N/A
New J	N/A	342	342		N/A
Central	N/A	359	359		N/A

Table 16: Access to water- Community Based Planning Program 2017 (Data Collection)

5.3. Access to Sanitation

Ward 19 community have access to flush toilets connected to a sewerage system.

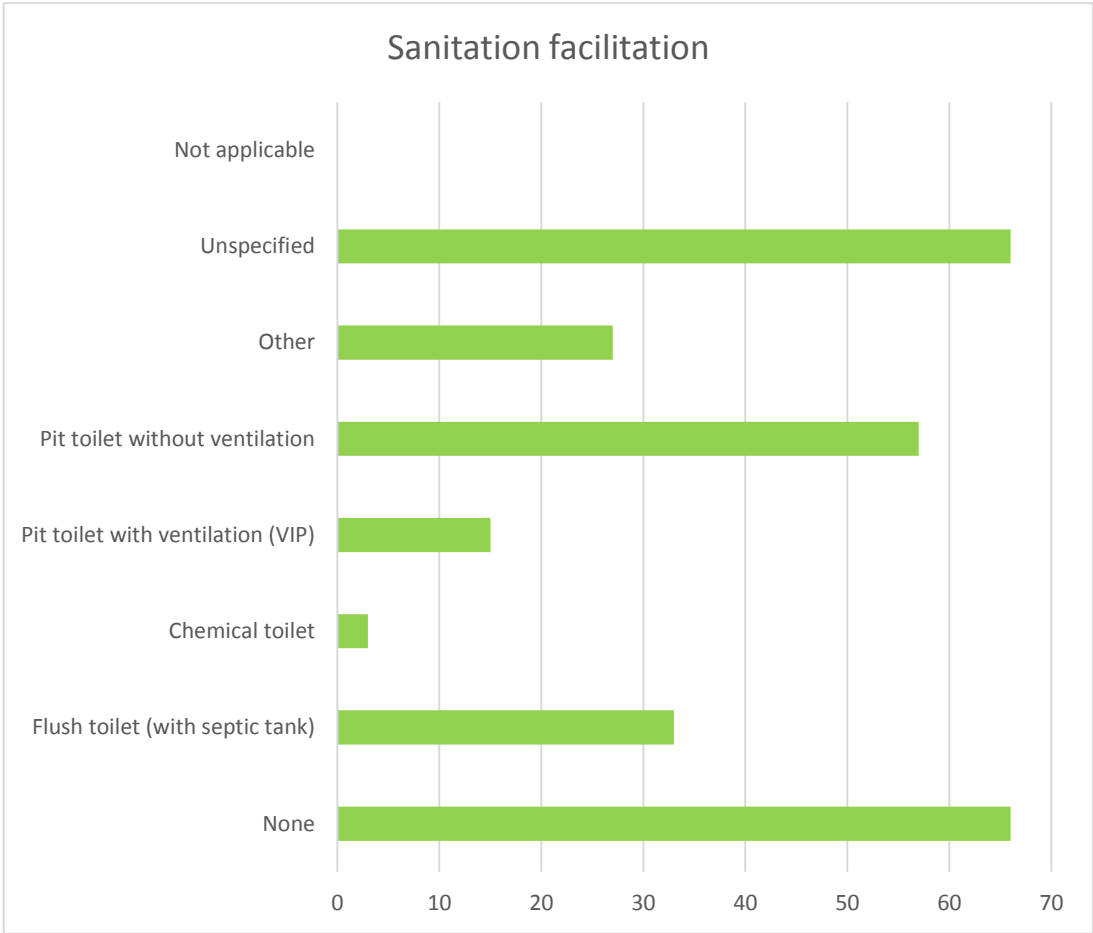
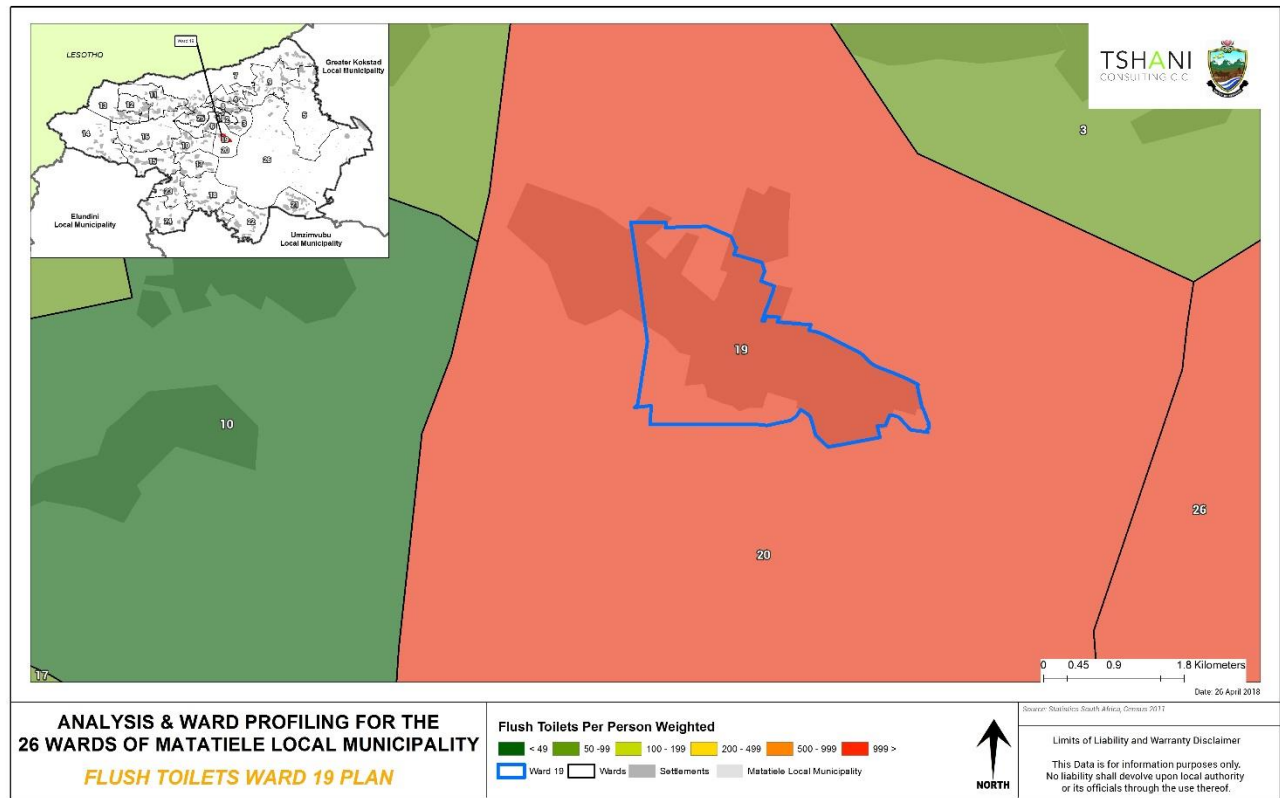


Figure 9: Access to Sanitation Facilities – Census 2011

VILLAGE/LOCATION	VENTILATED PIT TOILETS	FLUSH TOILETS	Other
North End	N/A	187	N/A
Westside	N/A	200	N/A
Buxton	N/A	290	N/A
New J	N/A	342	N/A
Central	N/A	359	N/A

Table 17: Access to sanitation- Community Based Planning Program 2017 (Data Collection)



Plan 5: Access to Flush toilets - Census 2011

5.4. Main Source of Energy within Ward Community Feedback

The main source of energy within the ward is electricity. Matatiele Local Municipality is the main Distributor of electricity in ward 19

VILLAGE /LOCATION	ELETRICITY	SOLAR	NO ELETRICITY/SOLAR
North End	187	N/A	N/A
Westside	200	N/A	N/A
Buxton	290	N/A	N/A
New J	342	N/A	N/A
Central	359	N/A	N/A

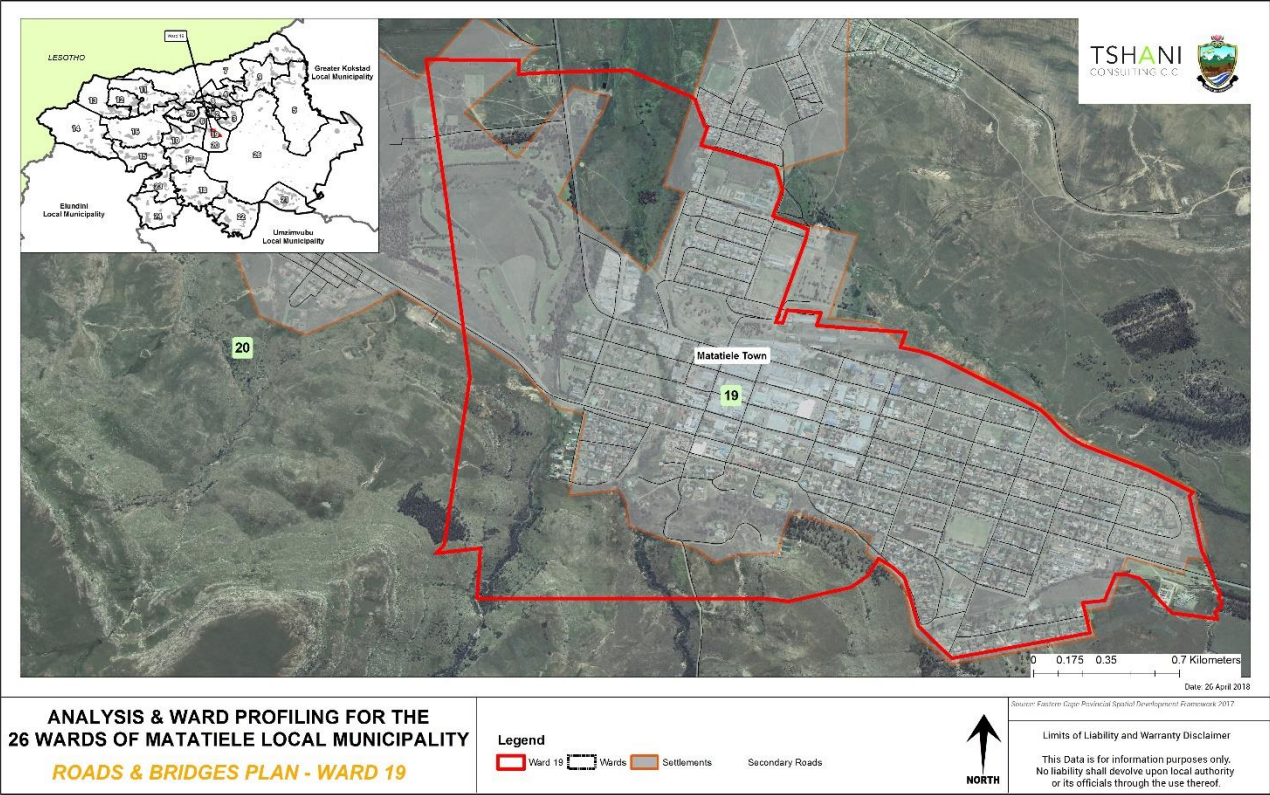
Table 18: Main source of Energy within Ward Community Feedback

5.5. Roads and Bridges

The roads and bridges located within Ward 19, however they are in need of maintenance, the internal streets are in poor conditions. The plan below picks up on the extent of roads networks which are present within the ward.

NAME AND TYPE	AREAS COVERED	CONDITION OF THE ROADS
NORTH END: Balloon Street, O'Reilly Street, Davey Street, William Street, Swan Road, Kok Street, Living Vine Circle, Jagger Street, Balloon Street 2	5 kilometres with tar	Poor, full of potholes
WEST SIDE: Hawkins Avenue, Leach Lane, West Street, Main Street, High Street, North Street, Long Street, Station Road, Main Street 2	4.5 kilometres of tarred roads	Poor, full of potholes especially High Street from Jagger to West Street, also the Bridge discussed in 5.1
BUXTON AVENUE: Fette street, Green street, Taylor street, Johnson street and Temple street, Castle Street, Woltemade Street, School Street, Seymour Street, Mayor's Walk	6.5 kilometres of tarred roads	Poor, full of potholes especially Woltemade Street, Taylor Street, Green Street, School Street, Mayor's Walk,
NEW J(FROM HIGH STREET DOWN) School Street, Pike Avenue, Davies Road, Raymond Rodgers Avenue, West Street, East Street,	7 Kilometres of tarred roads	Poor, full of potholes especially in Davies, School Street and Raymond Rodgers Avenue
CENTRAL (ALL ROADS FROM HIGH STREET DOWN FROM GREEN TO SCHOOL STREET) Railway Street, Station Road, North Street, High Street, Long Street, Fette Street, Castle Street, Green Street, Seymour Street, Mayor's Walk and East Street	12 kilometres of tarred roads	Poor, full of potholes in all mentioned roads

Table 19: Roads and Bridges within the Ward



Plan 6: Roads and Bridges within the Ward - MLM GIS

6. Current Projects

The following table highlighted the key projects which have been identified by the community.

No	PROJECT/PROGRAMME NAME	STATUS	WHO IS RESPONSIBLE
1.	Mini Sub Station	Complete	MLM
2.	Kgotsong TBH	In Progress	COEGA
3.	Council Chambers	In Progress	MLM
4.	Removing of Alien Plant	To Start	ANDM
5.	Fresh Produce Phase 2	Complete	MLM
6.	EPWP	In Progress	MLM/Public Works

Table 20: Current Projects within Ward Community Feedback

7. Ward Needs and Priorities

The need and priorities which have been identified need to be prioritised in the municipal SDF and other local plans created. The projects range from short to long term projects and have been further broken down in the implementation plan.

VILLAGE/LOCATION/ SUB AREA	NEEDS IDENTIFIED
NORTH END	<p>Living Vine Circle, Jagger Street from KFC to where it joins Balloon Street and new drainage pipes are needed, V-drains are full of cracks – to be closed and the parts between V drain and tar road, need to be tarred and roads need to be resurfaced, open donga between Khotsong TB Hospital and Living Vine Circle needs pipes to be put in and closed it is now a danger to children.</p> <p>Opening between Khotsong TB Hospital and Living Vine Circle needs to be fenced, becoming a thoroughfare for substance abusers going to the nearby hideout (Old Police Barracks)</p> <p>Opposite KFC. Jagger Street before Balloon, Illegal Containers need to be removed</p> <p>O'Reilly Street: V-drains need to be resurfaced with concrete housing, V-drains are full of cracks – to be closed and the parts between V drain and tar road, need to be tarred) streetlights, upgrading of parks, trade school employment, drainage pipe problem @ the shops.</p> <p>William Street: V-drains need to be resurfaced with concrete housing, , V-drains are full of cracks – to be closed and the parts between V drain and tar road, need to be tarred)</p> <p>street-lights, upgrading of parks, trade school employment, resurfacing of road, problem with storm water pipe running from town, corner of William and Jagger Street needs to be replaced.</p> <p>Existing neglected play-park to be turned into safe park for foundation phase learners, to play and do homework</p> <p>Davey Street: V-drains need to be resurfaced with concrete housing, , V-drains are full of cracks – to be closed and the parts between V drain and tar road, need to be tarred) street-lights, upgrading of parks, trade school employment, resurfacing of road, drain pipe running from town, corner of Davey and Jagger Street</p> <p>Kok Street: drain pipe running from town, corner of Kok and Jagger Street needs to be replaced</p> <p>Swan Road: storm water pipe running from town, corner of Swan Road and Jagger Street needs to be replaced</p> <p>Balloon Street: near Moravian Church, storm water catchment (new bigger storm water pipes need to be installed) Man-made catchment to be closed.</p>

	North End Extension (RDP Houses): Park is vandalised and needs to be fixed and also made into a safe park for all age groups
WEST SIDE	<p>High Street: from Jagger Street to West Street – railings on old pedestrian bridge need to be fixed, under the bridge leading towards the donga needs a bigger pipe to be installed to catch flood water. Road needs to be resurfaced, street-lights must be upgraded</p> <p>North Street: from North Street to Jagger Street – open area needs to be fenced/cordoned-off for security purposes and floodlight needs to be installed</p> <p>Kerbing and V-drains need to be cleaned and at the end of North Street towards Caravan Park, floodlight needs to be installed, because it's near a donga, trees and grass to be kept very short</p> <p>Long Street: from Long Street to Jagger Street – open area needs to be fenced/cordoned-off for security purposes and floodlight needs to be installed</p> <p>Kerbing and V-drains need to be cleaned and at the end of North Street towards Addis B&B, floodlight needs to be installed, because it's near a donga, trees and grass to be kept very short</p> <p>West Street from Station Road to New Fresh Produce Market needs to be resurfaced and streetlights need to be installed.</p> <p>West Street From R56 towards mountains needs to be resurfaced, more streetlights need to be installed</p> <p>Small road above R56 needs to be resurfaced</p>
BUXTON AVENUE	<p>Road above PnP and Prison: needs kerbing and resurfacing and dongas serving as Vdrains require pipes to be fitted and closed</p> <p>Road between Police Station and Magistrates Court: needs to be resurfaced</p> <p>Woltemade Street above KEHS Hostel: Resurfacing and Kerbing and Street Lights</p> <p>Mayor's Walk from Swimming Pool: Kerbing on both sides of the road</p> <p>School Street: from R56 right up to cul-de-sac requires resurfacing and at the end of the road a fence is needed between 2 houses</p> <p>Donga serving as V storm water drain from Police Station in Market Street needs to be closed and fitted with storm water drain pipes and kerbing</p> <p>Green Street from Woltemade to R56 needs kerbing alongside donga needs tar to be continued from existing to the kerbing</p>
NEW J	<p>Mayors Walk to R56 down to North Street needs to be resurfaced.</p> <p>Davies Road – needs to be resurfaced</p> <p>Raymond Rodgers from High Street, on the corner a floodlight is required and streetlights need to be upgraded, kerbing needs to be maintained</p> <p>Pike Avenue – cul-de-sac and kerbing needs to be maintained</p> <p>School Street to Railway Road – road needs to be resurfaced</p> <p>Railway Road to Fette Street – road needs to be resurfaced</p>

CENTRAL	<p>Railway Street: from School Street to Green Street, requires resurfacing, maintenance of kerbings and streetlights</p> <p>Station Road: from School Street to Seymour Street requires resurfacing</p> <p>Seymour Street: High Street to Railway Street requires resurfacing and streetlights</p> <p>R56 to Castle Street to Railway Street requires resurfacing and streetlights</p> <p>Long Street from Fette Street to Green Street requires resurfacing and maintenance of kerbings</p> <p>Green Street from R56 to Railway Road storm water drain requires upgrading</p> <p>From Station Road behind Choice Plaza to Newman's storm water drain system needs to be upgraded and bigger pipes need to be inserted</p> <p>Corner of Jagger and Long Street, man-hole requires upgrading</p>
---------	---

Table 21: Ward Priorities- Community Based Planning Program 2017 (Data Collection)

WARD 19	
INFRASTRUCTURE PRIORITIES	SOCIO- ECONOMIC PRIORITIES
1. Resurfacing of ALL roads	1. Land for Co-Ops and Entrepreneurs/
2. Housing (RDP and Low-Cost)	2. Rehabilitation Centre for Substance Abuse
3. Upgrading of Storm Water Drainage Systems and Sewer Lines	3. Semi-Attached Houses in Balloon Street (<i>Moer-Moer</i>), require existing outside toilets to be brought in the house
4. Existing Parks to be fenced and furnished.	

Table 22: Ward Priorities within Ward Community Feedback- Community Based Planning Program 2017 (Data Collection)

8. Stakeholder within Ward

The table below highlights the stakeholders which were engaged with during the Community engagement sessions.

NAME OF STAKEHOLDER	CONTACT PERSON AND TEL	
Department of Health	Mr S.	060 566 1003
Social Development	Ms K. Ntabeni	039 737 9108
Department of Education	Mr S. Gunkel	072 216 8227
Department of Home Affairs	Mr D. Mariwana	039 737 4208
SASSA	Mr Sibisi	072 132 0363
Saps	Mr N. Lungu	071 475 2253
Correctional Service	Mr J. Phamotse	
Department of Justice	Mr M. Zibane	082 953 0376
EMRS	Mr Makitela	083 348 6304
Elderly Forum	Mrs B. Rooi	073 386 7409
Youth Forum	Mr Kopano	079 429 9214
Matatiele Concerned Business	Mr P. Coetzee	073 213 7837

CFA	Mr T. Kirk	083 682 1768
Matatiele Rate Payers Assassination	Mr N. Shaik	073 179 4781
Matatiele Business Chamber	Mr Z. M	083 368 9841

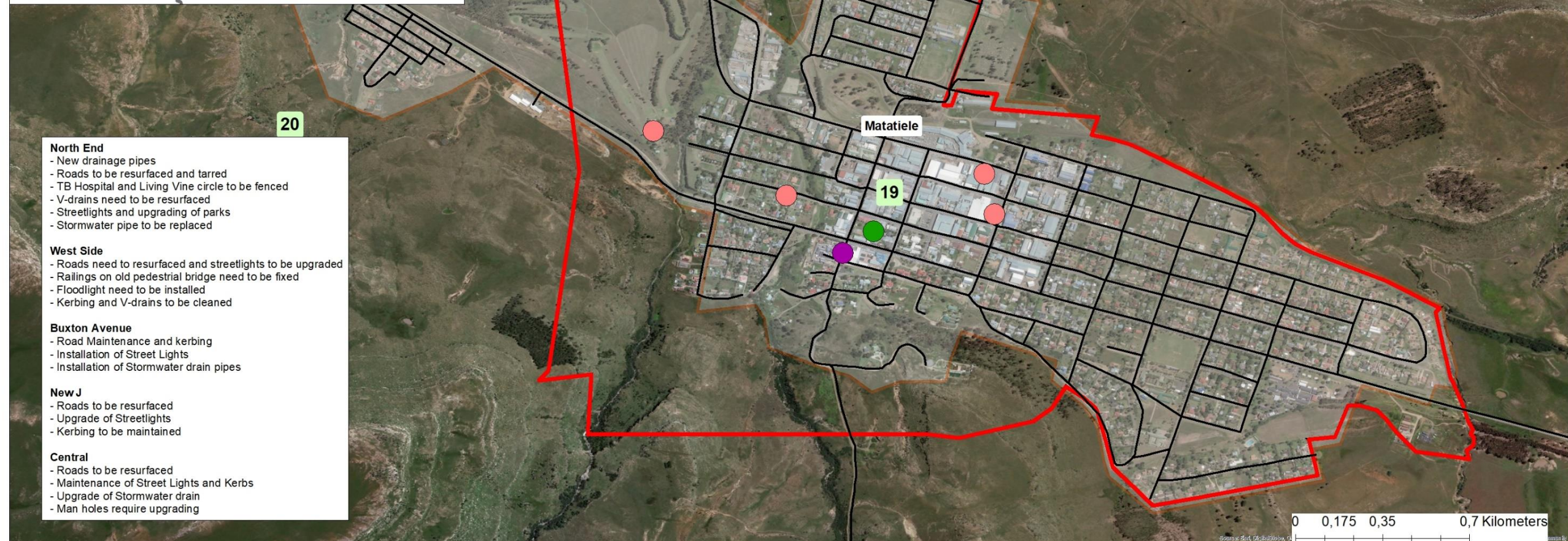
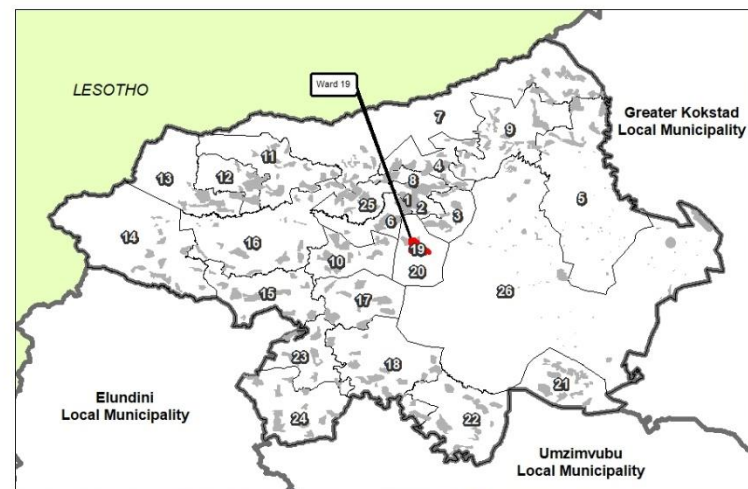
Table 23: Stakeholders within Ward Community Feedback- Community Based Planning Program 2017 (Data Collection)

9. Social Challenges

The ward has identified, substance abuse, house breaking and unemployment and school dropouts as the key social challenges. Such challenges are a popular trend in areas with a high youthful population and limited employment opportunities. Various departments should be engaged to address such social challenges as they affect whole ward.

CHALLENGED IDENTIFIED	AFFACTED AREAS	IMPACT
Substance Abuse	North End	Prevalent, especially alcohol abuse amongst the youth
School Drop outs	North End	
Unemployment	All	Crime/ Substance Abuse
Housing	North End Central	Limited housing vailable, people need rental accommodation and those needing to buy houses. Especially middle –income houses

Table 24: Social Challenge within Ward Community Feedback- Community Based Planning Program 2017 (Data Collection)



- North End**
- New drainage pipes
 - Roads to be resurfaced and tarred
 - TB Hospital and Living Vine circle to be fenced
 - V-drains need to be resurfaced
 - Streetlights and upgrading of parks
 - Stormwater pipe to be replaced
- West Side**
- Roads need to be resurfaced and streetlights to be upgraded
 - Railings on old pedestrian bridge need to be fixed
 - Floodlight need to be installed
 - Kerbing and V-drains to be cleaned
- Buxton Avenue**
- Road Maintenance and kerbing
 - Installation of Street Lights
 - Installation of Stormwater drain pipes
- New J**
- Roads to be resurfaced
 - Upgrade of Streetlights
 - Kerbing to be maintained
- Central**
- Roads to be resurfaced
 - Maintenance of Street Lights and Kerbs
 - Upgrade of Stormwater drain
 - Man holes require upgrading

ANALYSIS & WARD PROFILING FOR THE 26 WARDS OF MATATIELE LOCAL MUNICIPALITY

WARD PRIORITY - WARD 19

Legend

- IRM
- DdH
- DSD
- Ward 19
- Wards
- Settlements
- Secondary Roads



Source: Eastern Cape Provincial Spatial Development Framework 2017
Matatiele Local Municipality

Limits of Liability and Warranty Disclaimer

This Data is for information purposes only.
No liability shall devolve upon local authority
or its officials through the use thereof.